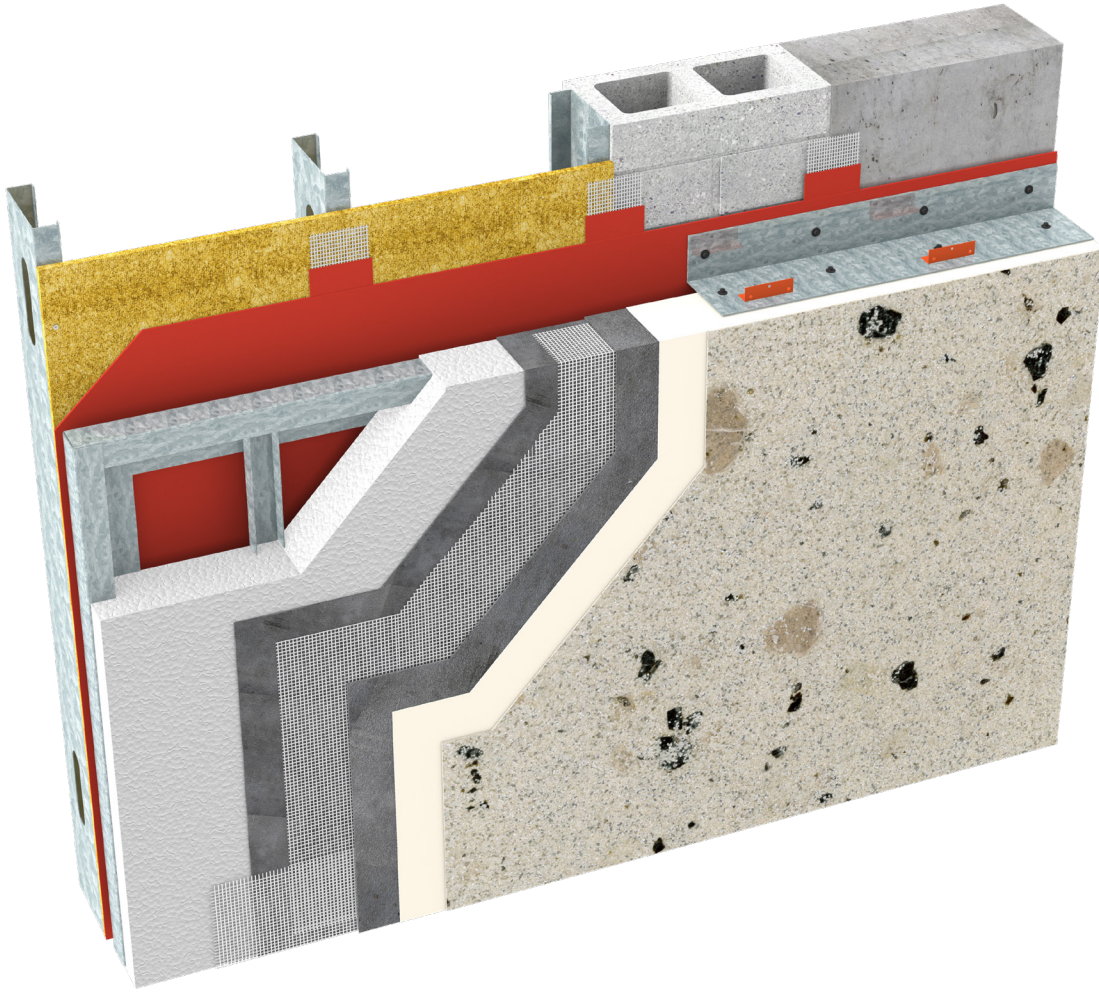


Durex[®] Panelite

*A Prefabricated Structural Cladding
Panel System*



CCMC 13103-R

CAN/ULC S716.1 Materials

CAN/ULC S716.2 Installations

CAN/ULC S716.3 Design Application

G.D.D.C Factor = 47%

C.I Factor = 0.65 RSI/Inch Type 1 EPS

= 0.70 RSI/Inch Type 2 EPS

= 0.70 RSI/Inch Semi-Rigid Mineral



PreFab Cladding



Ultra High Impact
Resistance



Drained



Cost Effective

Protect. Enhance. Outperform.

DURAbond

1-877-387-2266

info@durabond.com

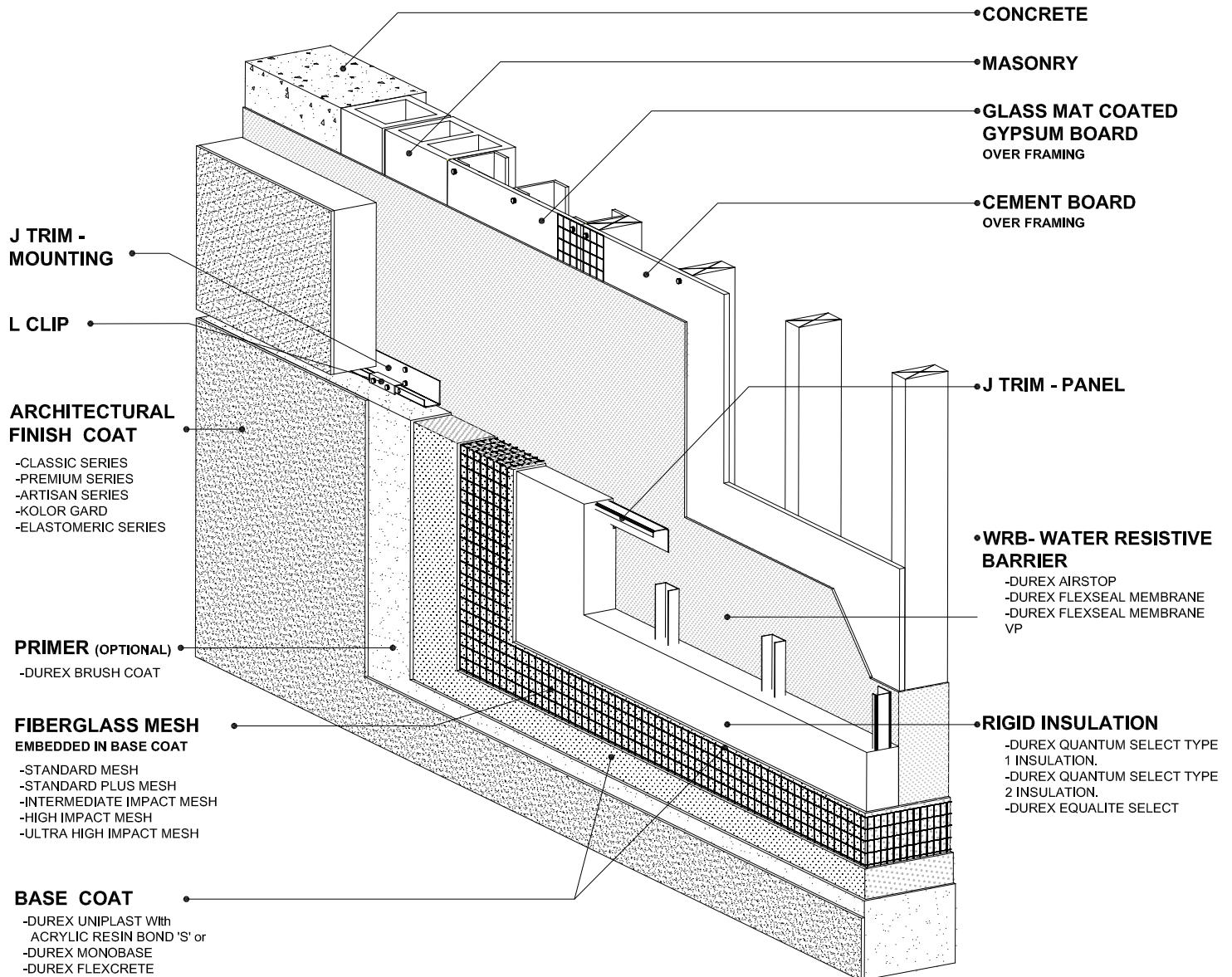
www.durabond.com



SYSTEM DETAILS

Durex® Panelite

Prefabricated Structural Cladding Panel

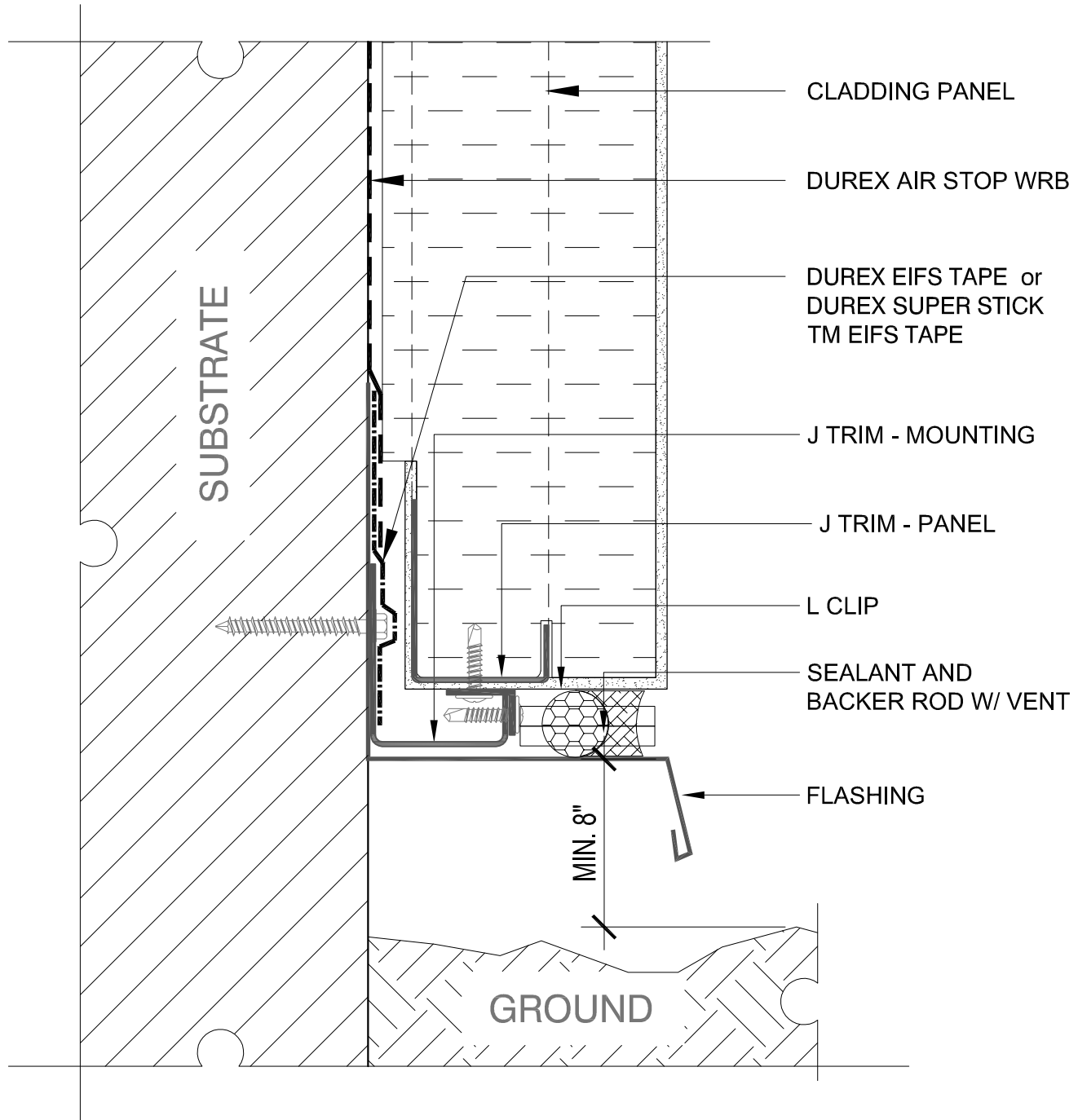


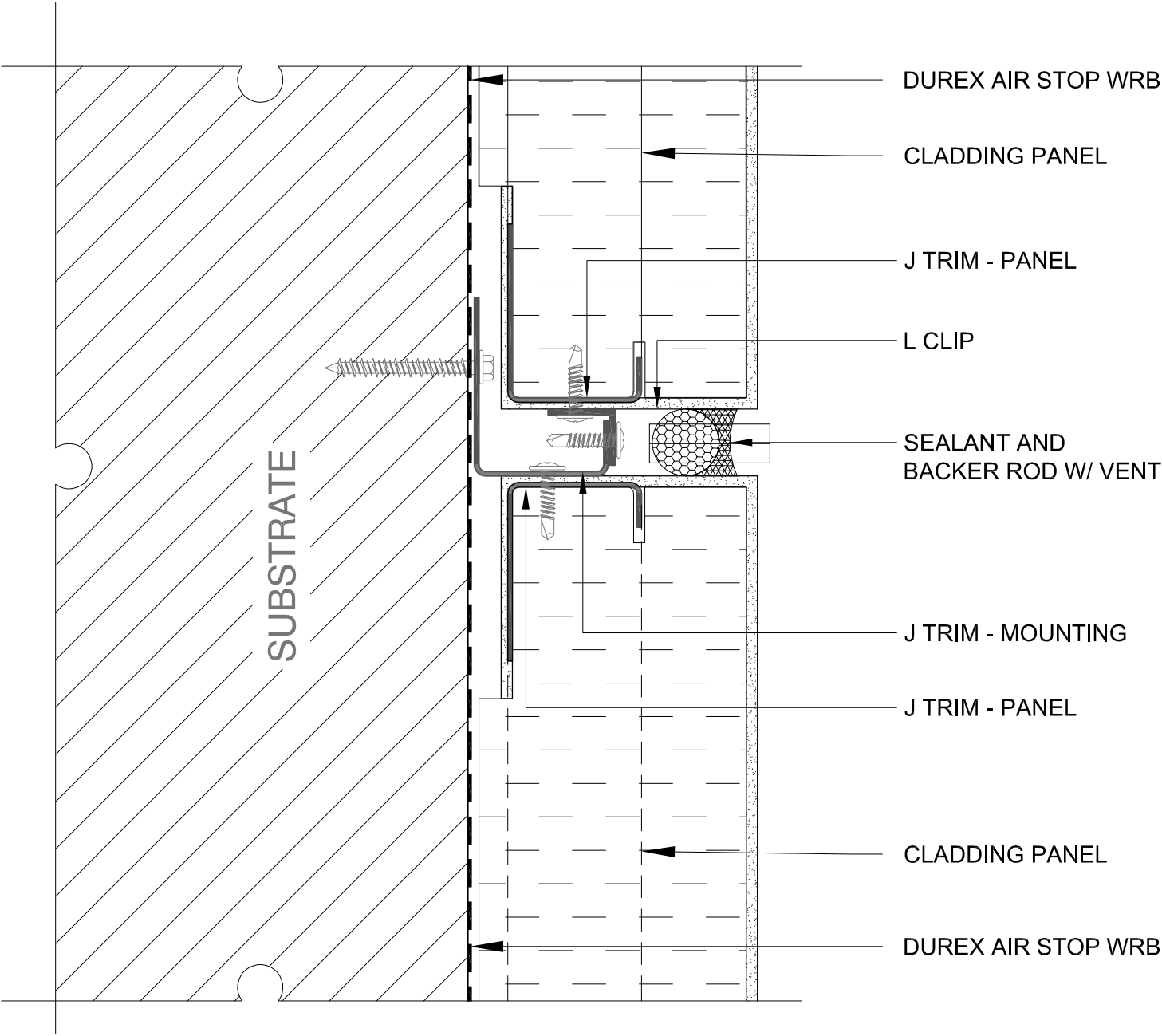
DURABOND

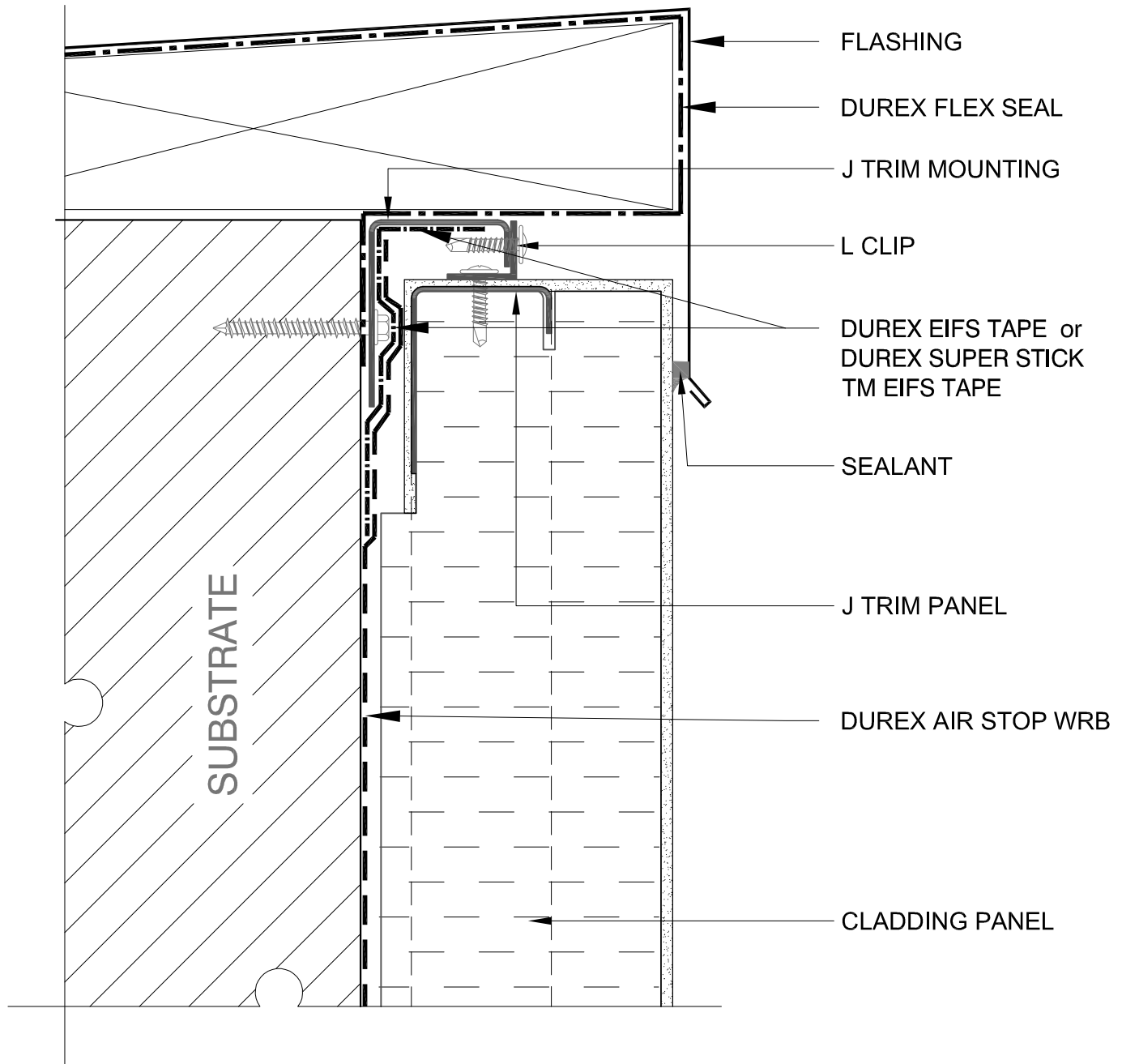
1-877-387-2266 - info@durabond.com - www.durabond.com

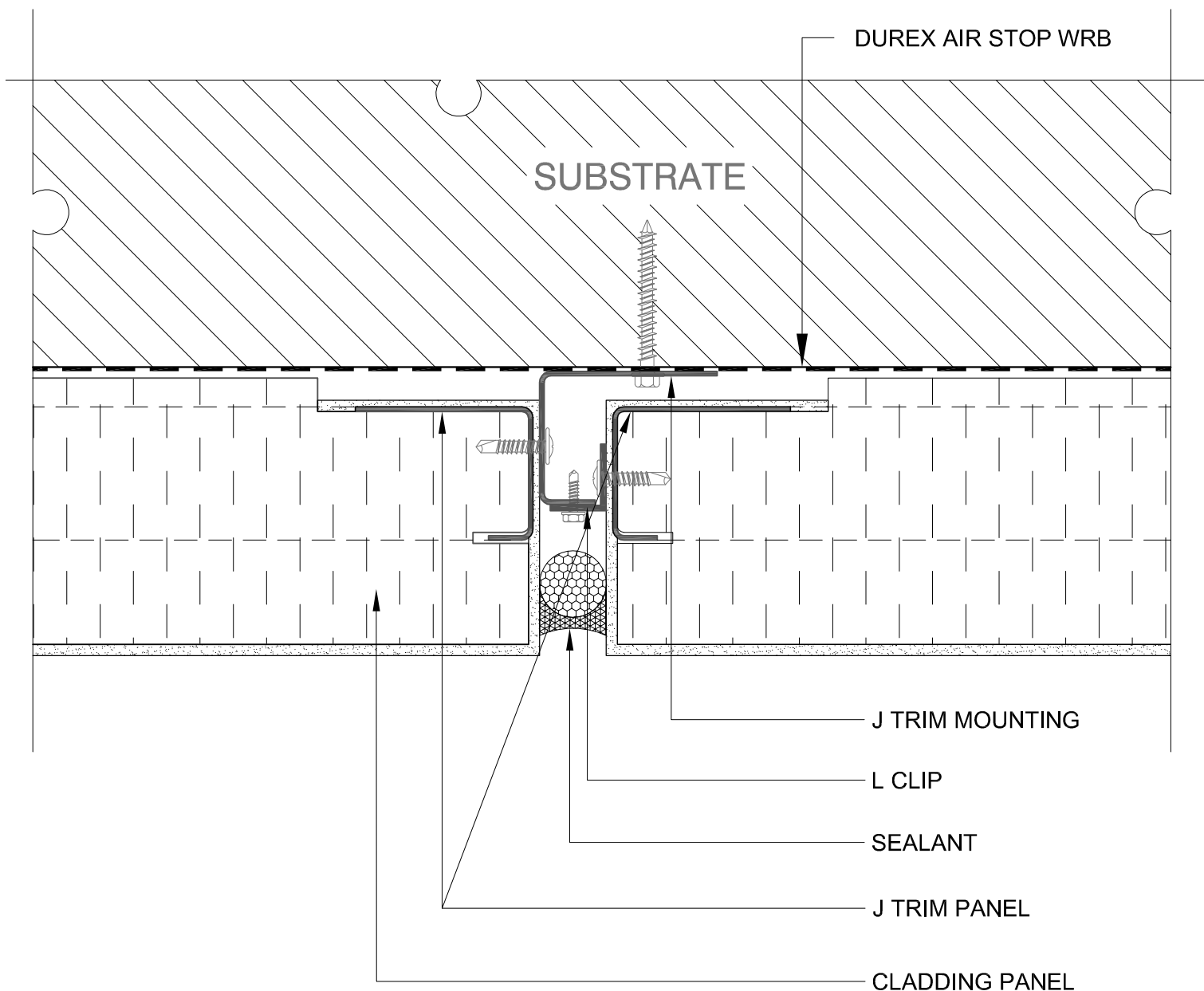
Durabond details are offered to assist in the development of project specific details; principles and variables incorporated in all details are the sole responsibility of the project professional(s).

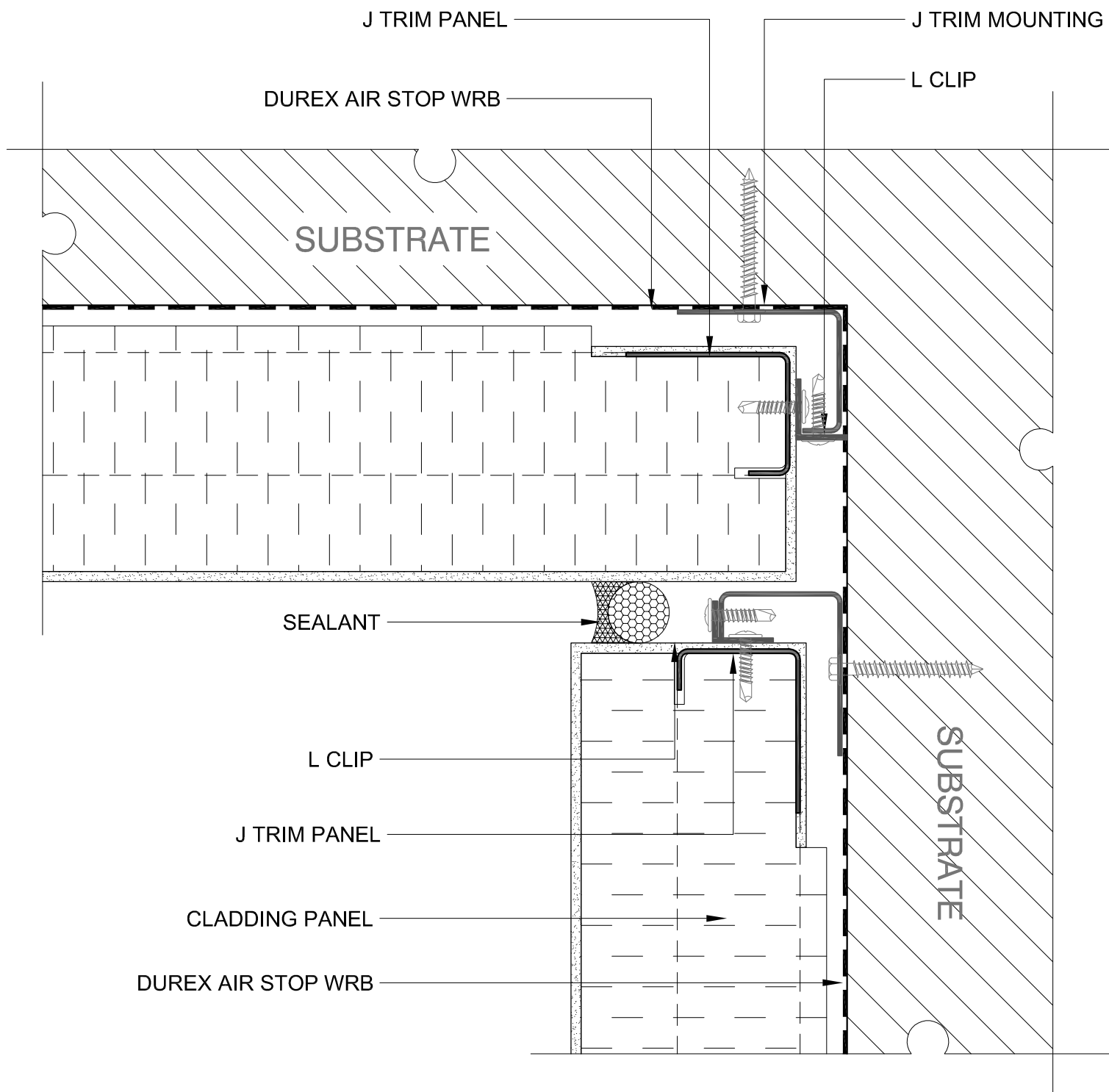
System Isometric & Components

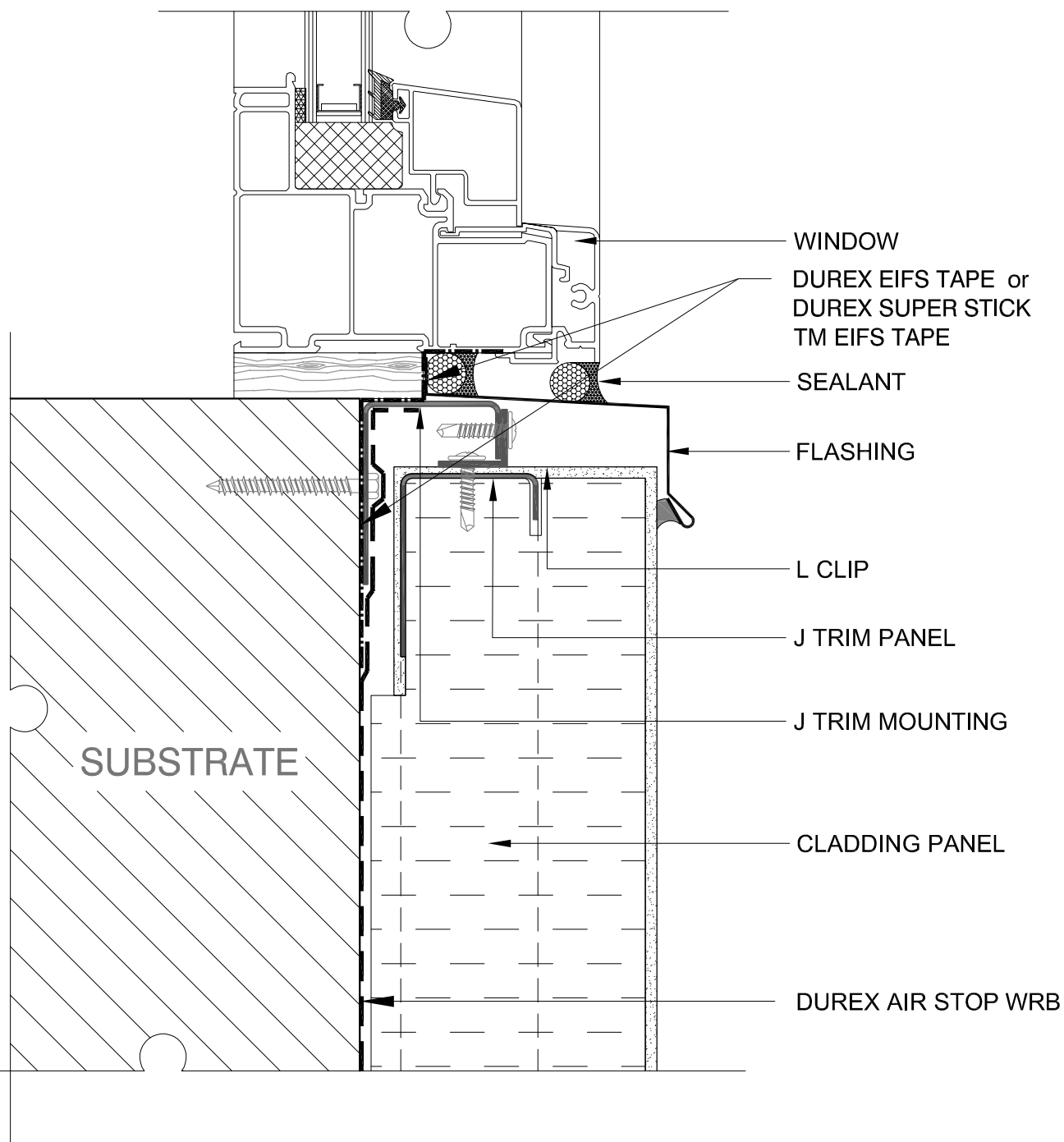




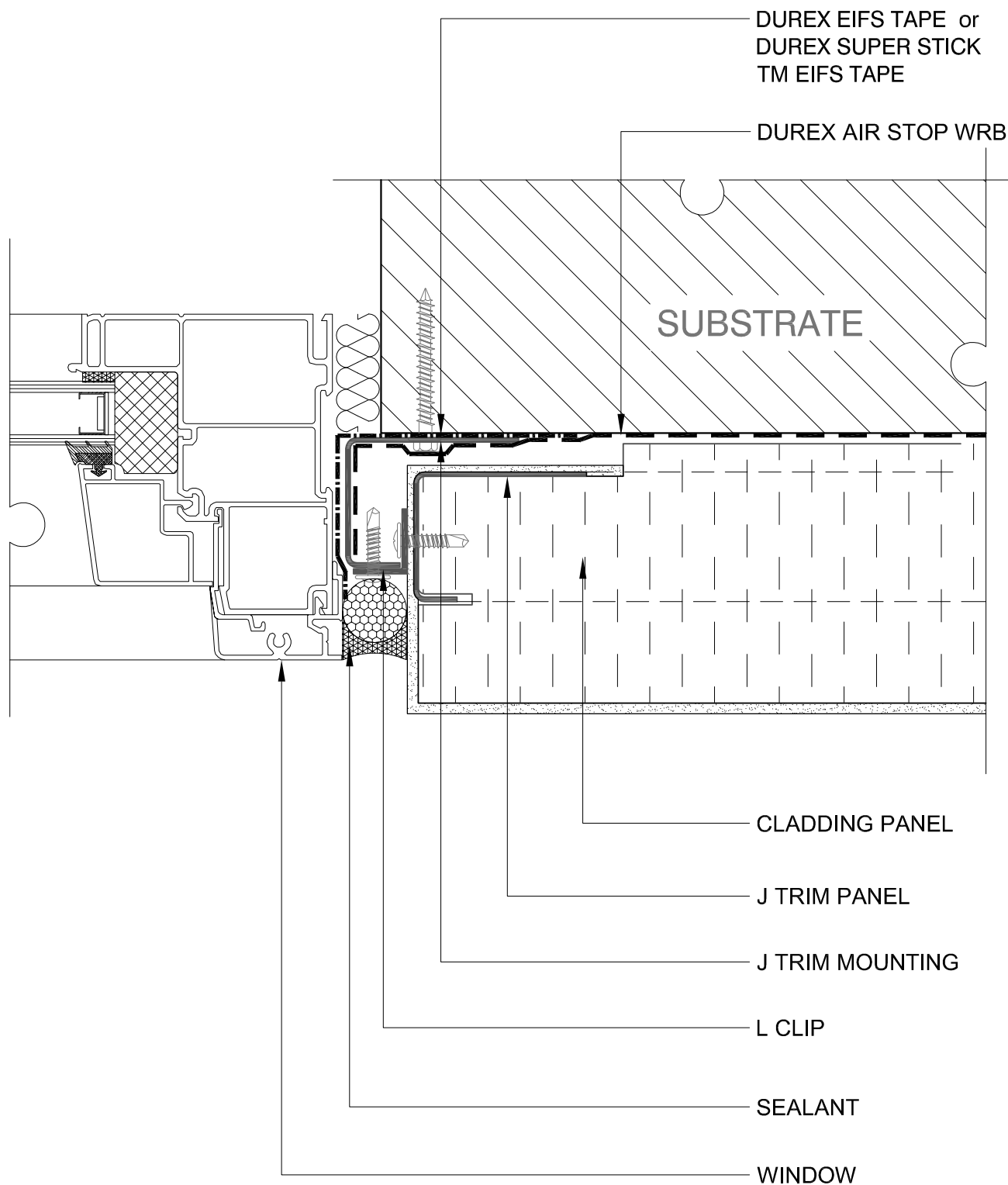








TYPICAL WINDOW JAMB. J TRIM CONNECTION PANEL INSTALLED AFTER WINDOWS



*TYPICAL WINDOW HEAD.
J TRIM CONNECTION
PANEL INSTALLED BEFORE WINDOWS*

